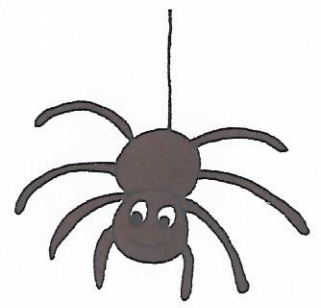


8er Einmaleins



$1 \cdot 8 =$

$2 \cdot 8 =$

$3 \cdot 8 =$

$4 \cdot 8 =$

$5 \cdot 8 =$

$6 \cdot 8 =$

$7 \cdot 8 =$

$8 \cdot 8 =$

$9 \cdot 8 =$

$10 \cdot 8 =$

